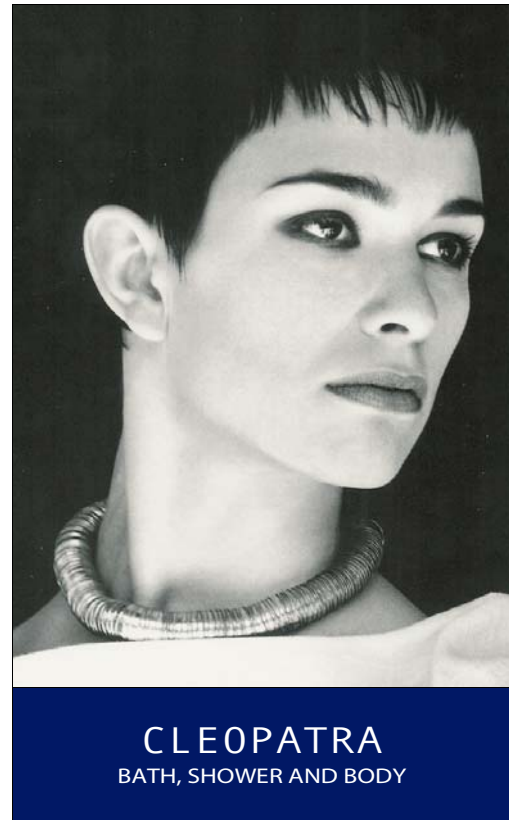


# BAGNO CLEOPATRA



## BAGNO CLEOPATRA

Wellbeing from the most valuable milk substances, with plant oils and a fragrance of delicate flower blossoms, making your skin care a sensuous experience.

CREAM BATH

MASSAGE CREAM



Sample sachets available for most products



MILK BATH

SHOWER CREAM

SHOWER PEELING

LUXURY SOAP

BODY MILK

## PRODUCT INFORMATION

CLEOPATRA SHOWER AND BATH RANGE	CLEOPATRA CREAM BATH	CLEOPATRA MASSAGE CREAM	CLEOPATRA MILK-BATH
<b>Advantages</b>	Bath milk for velvety soft and supple skin. Contains valuable substances from genuine Swiss alpine milk and sweet almond oil. Skin caring, moisturising, and providing elasticity.	Especially rich moisturising cream for body massage. With almond and palm oils. Suitable for dry and demanding skin.	Bath powder for velvet soft skin. Contains valuable substances from genuine Swiss alpine milk and barley. Skin caring without drying. A delicate fragrance of flower blossoms gives you an especially sensuous feeling.
<b>Application</b>	Fill bath tub with warm water (35-38° C). Add 20 to 25 ml of bath preparation and stir well to activate ingredients to their maximum effectiveness. Relax and enjoy your bath for 10 to 15 minutes. Also suitable for whirlpool bath.	For daily use for any skin type.	Fill bath tub with warm water (35-38°C). Add 1-2 tablespoons of bath powder and stir well to activate ingredients to their maximum effectiveness. Relax and enjoy your bath for 10 to 15 minutes. Also suitable for whirlpool bath.
<b>Contents</b>	250 ml	150 ml	150 g
<b>Ingredients</b>	Aqua (water), glyceryl stearate, glycerine, prunus amygdalus dulcis (sweet almond oil), dry milk, fragrance, cetearyl alcohol, phenoxyethanol, methyl-/ethyl-/propyl-/butyl-benzoate, isopropylmyristate, potassium sorbate, lactic acid, sodium cetearyl sulphate, lecithin, tocopherol (INCI-declaration)	Aqua (water), palm glycerides, prunus amygdalus dulcis (sweet almond oil), cetearyl alcohol, cetearyl glucoside, glycerine, aloe barbadensis (leaf juice), fragrance, sodium cetearyl sulphate, lecithin, sclerotium gum, sodium bicarbonate, ascorbyl-palmitate, potassium sorbate, dodecyl gallate, tocopherol (INCI-declaration)	Dry milk, hordeum vulgare (barley), sodium methyl-oleate taurate, chalk, sodium bicarbonate, fragrance, silica. (INCI-declaration)

CLEOPATRA SHOWER AND BATH RANGE	CLEOPATRA SHOWER CREAM	CLEOPATRA SHOWER PEELING	CLEOPATRA LUXURY SOAP	CLEOPATRA BODY MILK
<b>Advantages</b>	Body shampoo for soft and supple skin. Contains valuable substances from milk and oats. Provides intense skin care while showering. Enhances the natural protective skin functions. pH-value ~ 5.5. Alkaline free.	Delicate foaming Shower Peeling for smooth and supple skin. Granular extract from bamboo carefully removes old skin cells and activates natural skin functions without drying.	Very mild, alkaline free soap for body and face. pH-value ~ 6.5.	Body milk for soft and supple skin. With almond oil, wheat germ extract and hamamelis. Intensely caring and moisturising. Enhances the natural protective skin functions. pH-neutral.
<b>Application</b>	For daily use for any skin type.	Lather up cream in your hands and apply to wet body. Massage lightly with circular motion. Then rinse off thoroughly. Skin ideal pH value ~5.5, alkaline free, no chemical preservatives.	For daily use for any skin type.	For daily use for any skin type.
<b>Contents</b>	150 ml	150 ml	100 g	200 ml
<b>Ingredients</b>	Cocamidopropyl hydroxysulfate, disodium lauroamphodiacetate, disodium cocamidopropyl sulfosuccinate, glycol distearate, sodium lauryl sulphate, water, sodium laureth sulphate, dry milk, sunflower seed oil, sodium lauryl oat amino acids, fragrance, cocamide dea, stearamide mea, lactic acid. (INCI-declaration)	Disodium cocoamphodiacetate, glycerine, sorbitol. Aqua (de-mineralised water), cocoglucoside, silica, betaine, bambusa arundinacea (bamboo extract), lactic acid, fragrance (INCI-declaration)	Disodium lauryl sulfosuccinate, sodium coco sulphate, corn starch, cetearyl alcohol, Aqua (water), fragrance, titanium dioxide (INCI-declaration)	Aqua (water), zeamays (corn oil), prunus amygdalus (sweet almond oil), myristyl myristate, cocoglycerides, steareth-7, stearyl alcohol, saccharide isomerate, sorbitol, fragrance, triticum vulgare (wheat germ extract), hamamelis virginiana (witch hazel extract), phenoxyethanol, methyl-/ethyl-/propyl-/butylbenzoate, usnea barbata (lichen extract), isopropylmyristate, lecithin, citric acid, tocopherol. (INCI-declaration)